

NOKIA 9210 Communicator



SUPPORT GUIDE FOR HOW TO USE NOKIA 9210 COMMUNICATOR AS A MODEM VIA SERIAL PORT CABLE IN WINDOWS 2000

NOKIA

Contents

1. INTRODUCTION	1
2. INSTALLING AND SETTING UP MODEM DRIVER	1
3. SETTING UP A DIAL-UP CONNECTION FOR USE WITH THE NOKIA 9210 COMMUNICATOR VIA CABLE IN WINDOWS 2000	5
4. TROUBLESHOOTING.....	11

Legal Notice

Copyright © Nokia Mobile Phones 2002. All rights reserved.

Reproduction, transfer, distribution or storage of part or all of the contents in this document in any form without the prior written permission of Nokia is prohibited.

Nokia and Nokia Connecting People are registered trademarks of Nokia Corporation. Other product and company names mentioned herein may be trademarks or trade names of their respective owners.

Nokia operates a policy of continuous development. Nokia reserves the right to make changes and improvements to any of the products described in this document without prior notice.

Under no circumstances shall Nokia be responsible for any loss of data or income or any special, incidental, consequential or indirect damages howsoever caused.

The contents of this document are provided "as is". Except as required by applicable law, no warranties of any kind, either express or implied, including, but not limited to, the implied warranties of merchantability and fitness for a particular purpose, are made in relation to the accuracy, reliability or contents of this document. Nokia reserves the right to revise this document or withdraw it at any time without prior notice.

1. INTRODUCTION

The purpose of this document is help you to use Nokia 9210 Communicator as a modem via serial port cable.

2. INSTALLING AND SETTING UP MODEM DRIVER

Go to **My Computer – Control Panel – Phone and Modem Options**. In Phone And Modem Options go to Modems leaflet and click on **Add...**

In Add/Remove Hardware Wizard **select Don't detect my modem; I will select it from a list** and click **Next** (Figure 1).

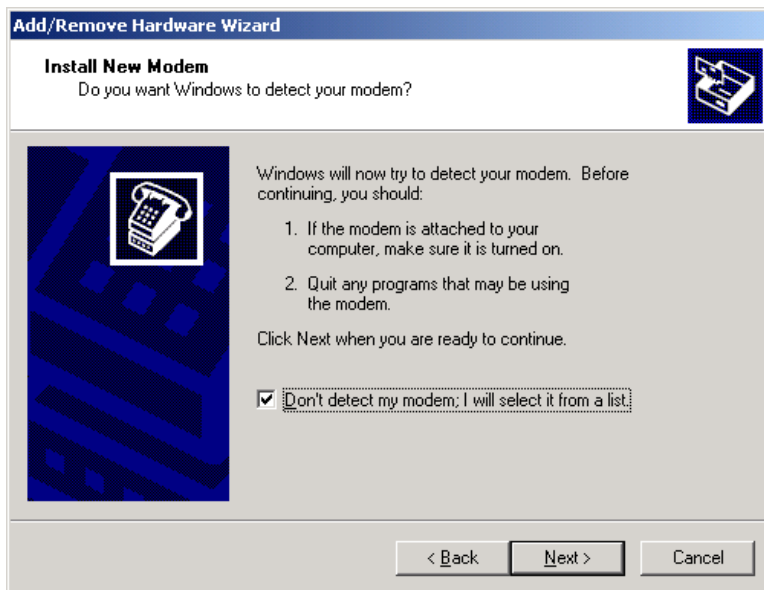


Figure 1. Installing the Nokia 9210 Communicator as a modem.

In Add/Remove Hardware Wizard select **Have Disk...** (Figure 2).

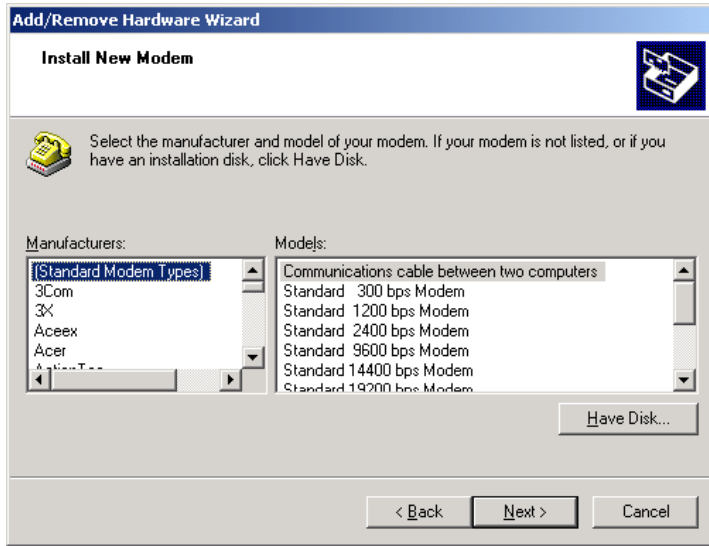


Figure 2.

In Install From Disk click **Browse...** and browse to the CD-ROM drive where the Nokia 9210 Communicator CD-ROM is. Alternatively the mdmn9210.inf file is available on <http://www.nokia.com/phones/productsupport/9210/index.html> (Figure 3).

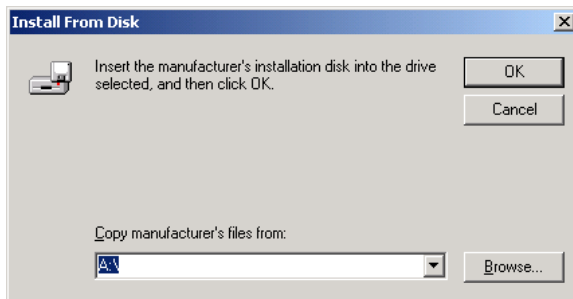


Figure 3.

Now select the cable version of driver and click **Next** (Figure 4).

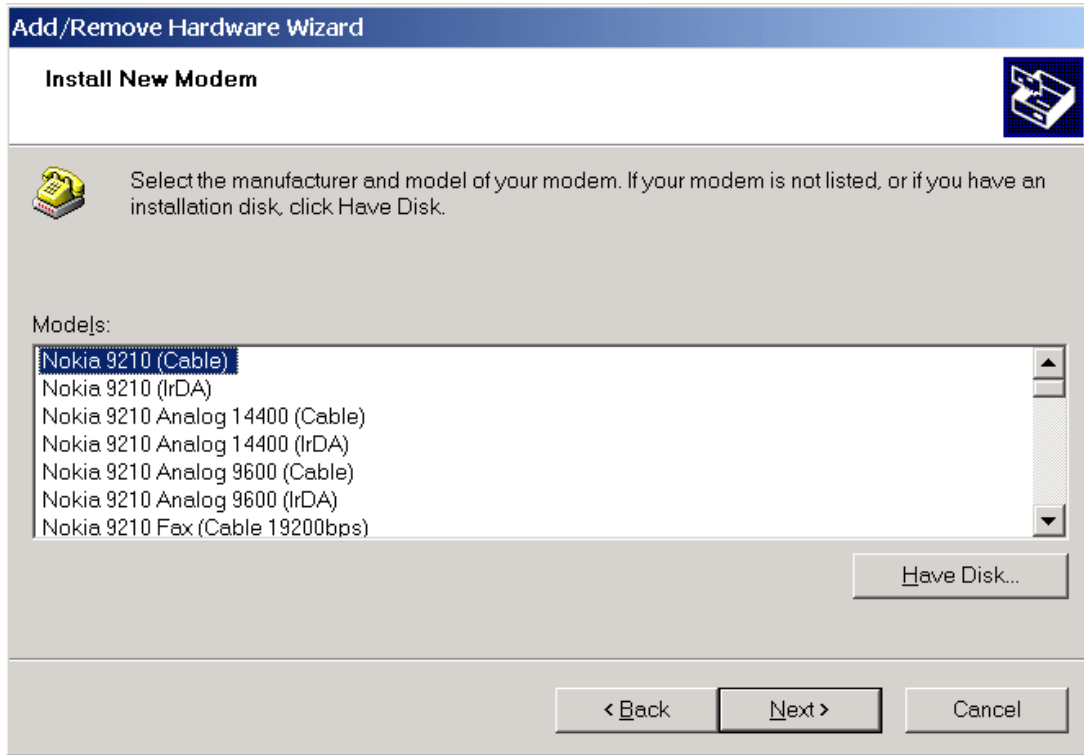


Figure 4. Selecting modem driver.



Tip: If you want to use High Speed connection, High Speed Data Services must be activated on the SIM card by GSM Operator.



Tip: If you use fax software i.e. WinFaxPro 10 and Nokia 9210 Communicator is as a modem via serial port cable, install first Nokia 9210 Fax (Cable 19200 bps)

Select appropriate port and click **Next** (Figure 5).

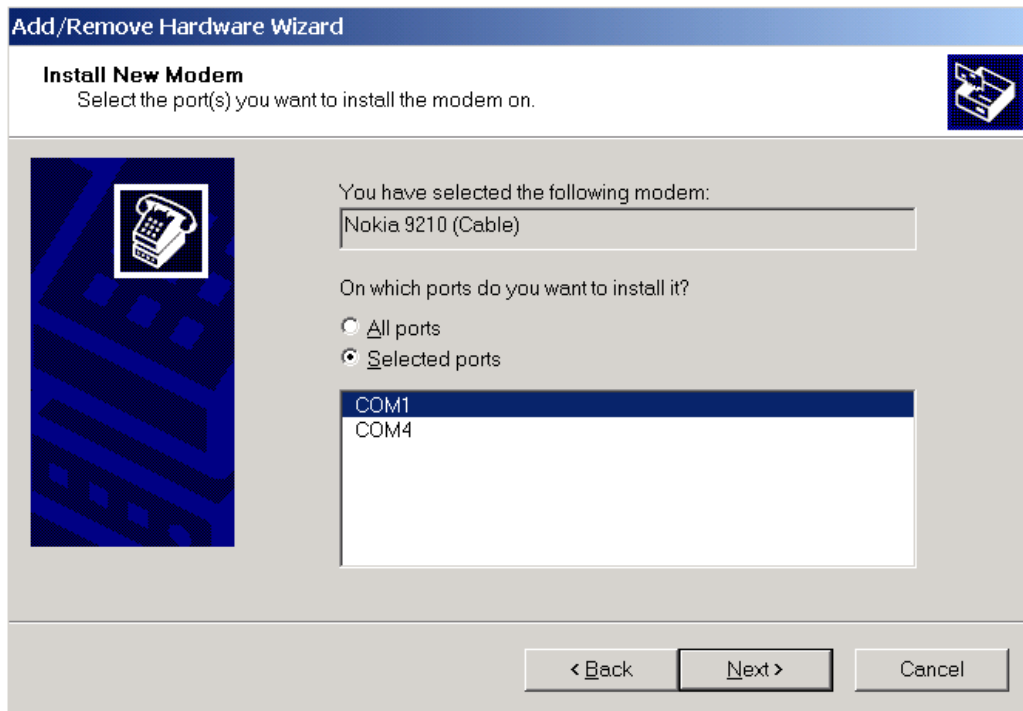


Figure 5

After you have selected the appropriate modem .inf file Windows will ask you a question (Figure 6): (just click on **Yes**).

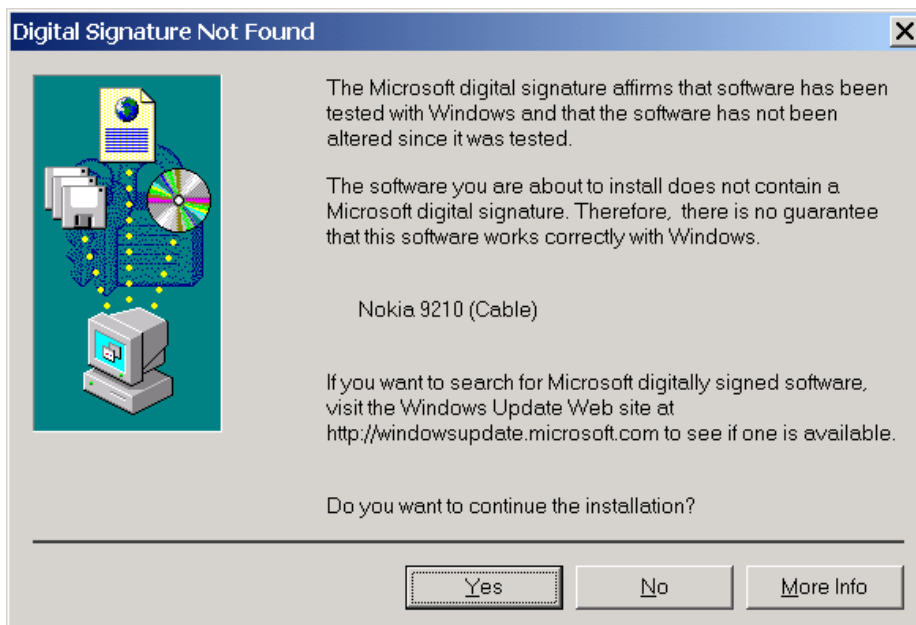


Figure 6. Accepting warning.

Now you have successfully installed a new modem to your computer. Just click **Finish**. (Figure 7).

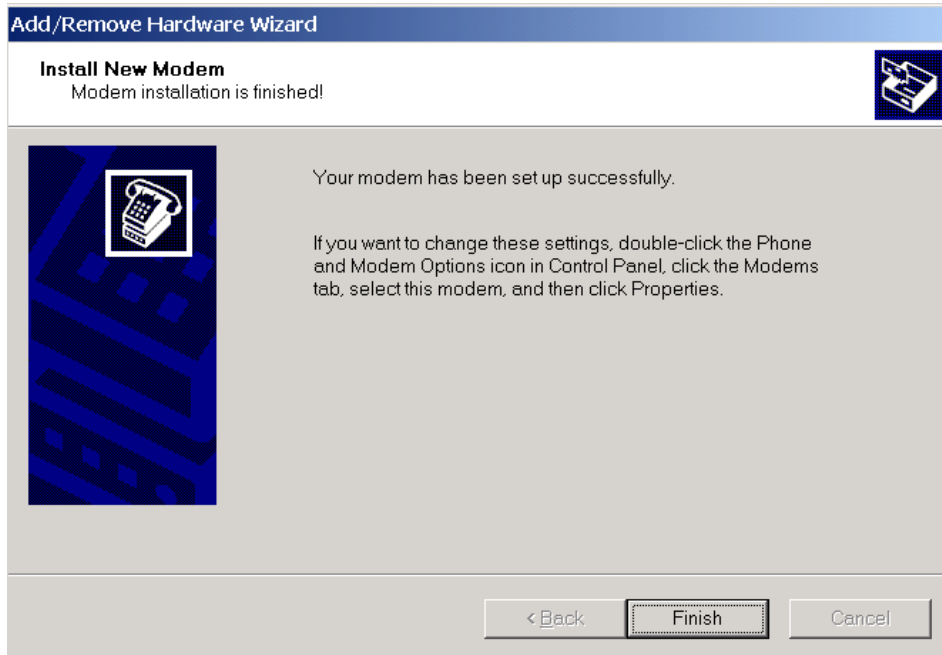


Figure 7.

3. SETTING UP A DIAL-UP CONNECTION FOR USE WITH THE NOKIA 9210 COMMUNICATOR VIA CABLE IN WINDOWS 2000

In the communicator select Extras - Fax modem – Settings. For Connection type select **Cable**, Transfer rate **19200**, Data bits **8**, Stop bits **1**, Flow control **Software**. (Figure 8).

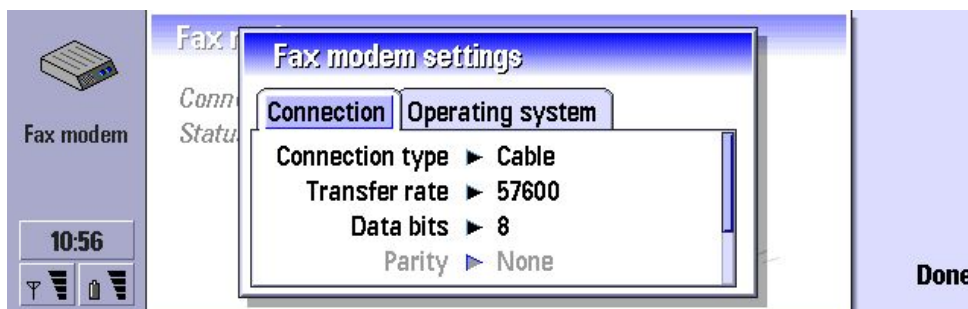
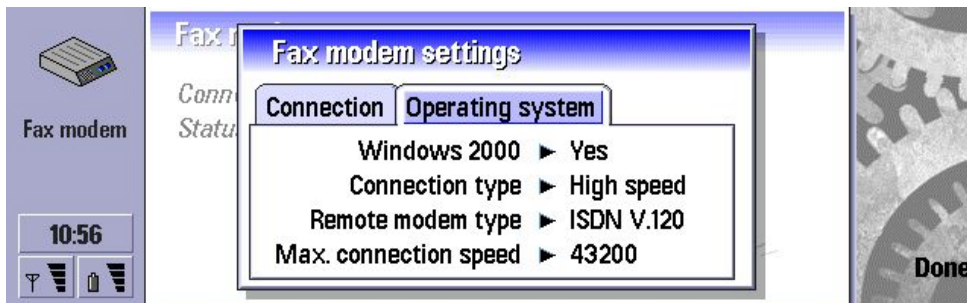


Figure 8.



Note: Transfer rate is the speed with which the data is transferred between your communicator and PC. The best transfer rate for normal GSM calls is 19200. For high-speed calls, you should select 57600 or 115200.

Change tab to **Operating system** by pressing **Menu** button. For **Windows 2000** select **Yes**. Set **Connection type**, **Remote modem type** and **Max. connection speed** to the same settings you entered for the modem driver you installed on your PC and then select **Done**. (Figure 9).



(Figure 9).

Press **Activate** in the Fax modem main view. (Figure 10).

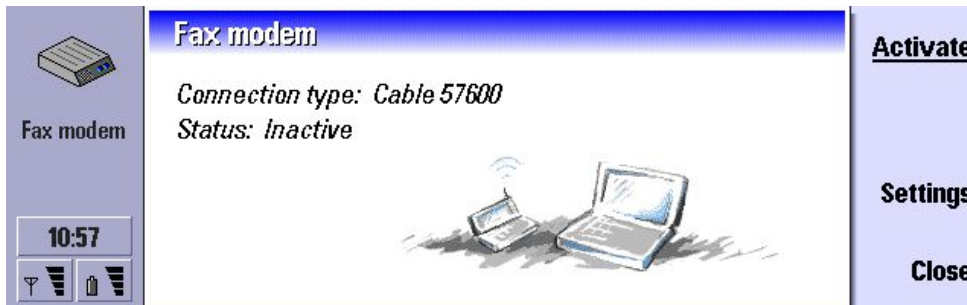


Figure 10.

Click **Next** in Network Connection Wizard of Windows 2000 (Figure 11).



Figure 11.

Choose either **Dial-up to private network** or **Dial-up to the Internet** and click **Next**. (Figure 12).

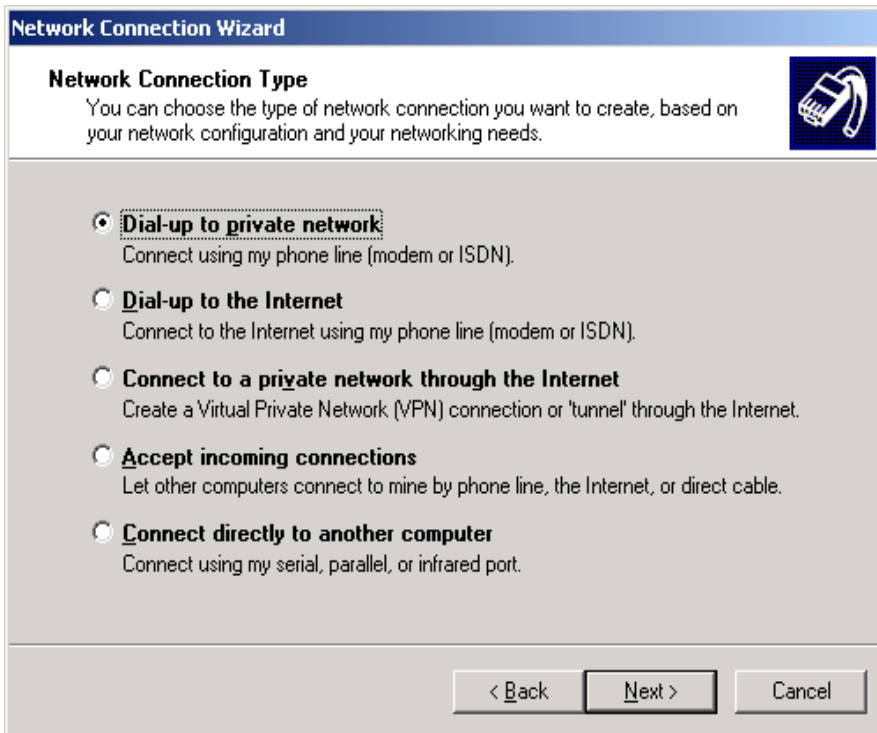


Figure 12.

Choose applicable modem and click **Next**. (Figure 13).

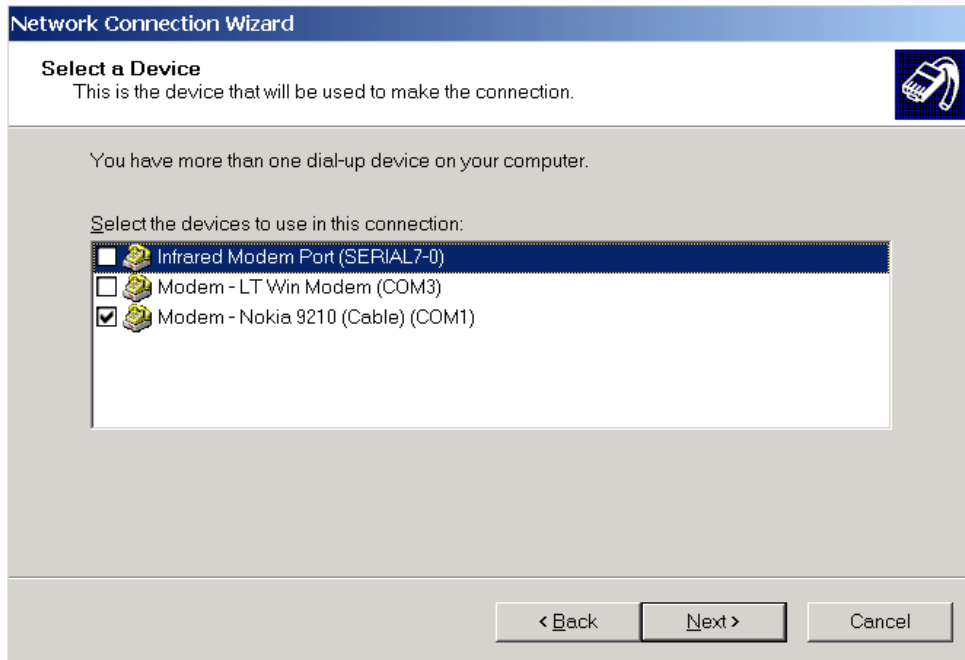


Figure 13.

Type in the ISP's phone number and click **Next** (Figure 14).

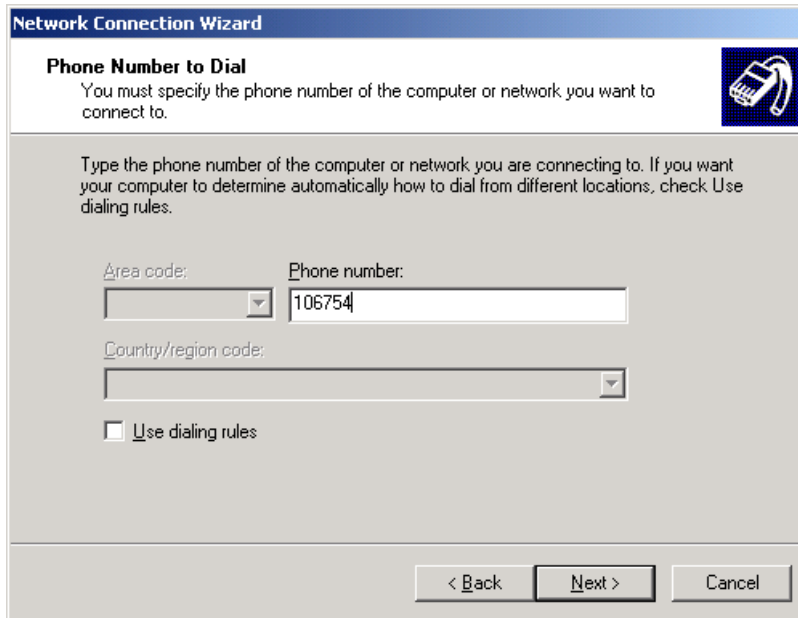


Figure 14.

Choose either **For all users** or **Only for myself** and click **Next** (Figure 15).

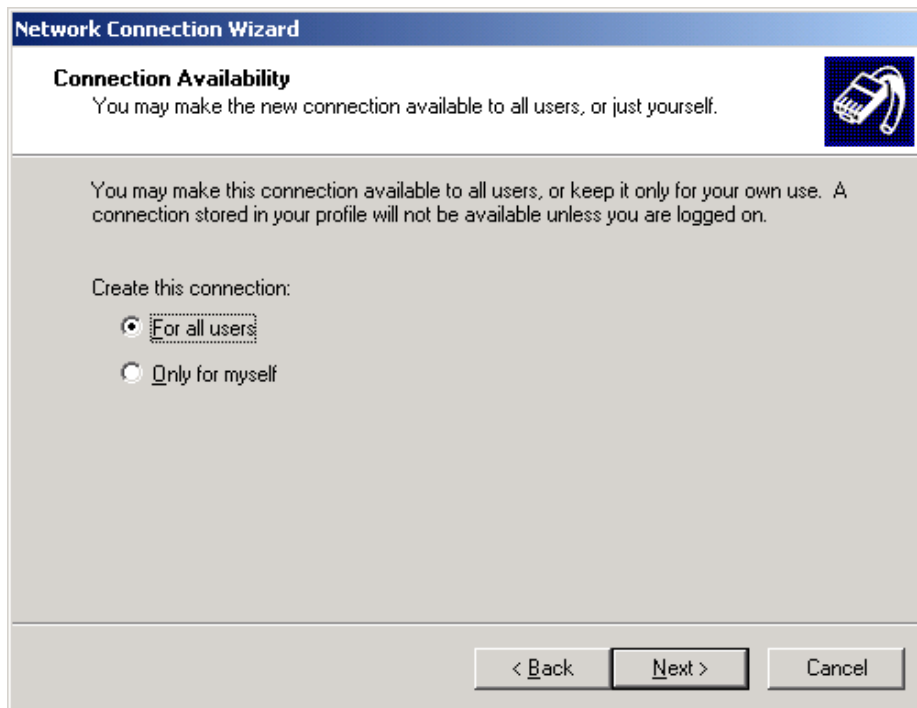
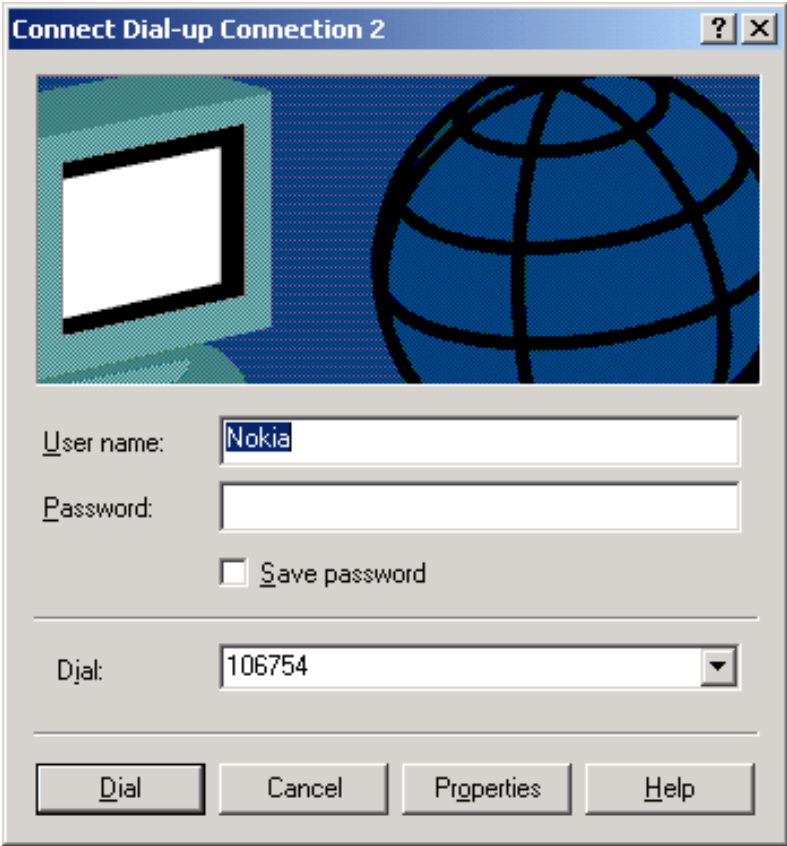


Figure 15.

Name the connection and click **Finish**.



Now you should be able to establish a Dial-Up connection to your ISP.



4. TROUBLESHOOTING



Note: If you have already checked all the settings and a data call is not established, try to reboot your PC. It is also recommended that you restart your Nokia 9210 Communicator by removing battery.

If you get an error message (Error :797) before Dial Up starts dialling.

- Check that cable is connected

If you get an error message (Error :770) after Nokia 9210 Communicator has started to dial

- If you have installed PC Suite for Nokia 9210 on your PC close the PC Suite icon on the taskbar. Also close the Copy Anywhere icon.



PC Suite icon Copy Anywhere icon

- If there is another piece of software using same Com port, close it and try again.
- Check that in Modem configuration in Dial-up settings there is in the hardware features selected only: Enable modem error control. If it is missing or there are other items selected, remove this Dial-up connection and create it again.

If you get an error message (Error 692) after 9210 has started to dial

- Check that cable is connected
- Check that you have activated Fax modem in Nokia 9210 Communicator
- Check that you have selected same speed than you have selected to 9210 Fax modem settings connection page to following places in PC:
 1. Device manager-Modems-Nokia 9210...-Modem-Maximum port speed.
 2. Device manager-Ports-Communication port-Port settings- Bit per second
 3. Network and Dial-up connections- Dial Up's properties-Modem-Nokia 9210... - Configure-Maximum speed (bps)