

NOKIA 9210 Communicator



SUPPORT GUIDE FOR HOW TO USE NOKIA 9210 COMMUNICATOR AS A MODEM OVER IR CONNECTION IN WINDOWS 2000

NOKIA



Contents

1. INTRODUCTION	1
2. SETTING UP A DIAL-UP CONNECTION FOR USE WITH THE NOKIA 9210 COMMUNICATOR VIA CABLE IN WINDOWS 2000	1
3. TROUBLESHOOTING.....	6

Legal Notice

Copyright © Nokia Mobile Phones 2000. All rights reserved.

Reproduction, transfer, distribution or storage of part or all of the contents in this document in any form without the prior written permission of Nokia is prohibited.

Nokia and Nokia Connecting People are registered trademarks of Nokia Corporation. Other product and company names mentioned herein may be trademarks or tradenames of their respective owners.

Nokia operates a policy of continuous development. Nokia reserves the right to make changes and improvements to any of the products described in this document without prior notice.

Under no circumstances shall Nokia be responsible for any loss of data or income or any special, incidental, consequential or indirect damages howsoever caused.

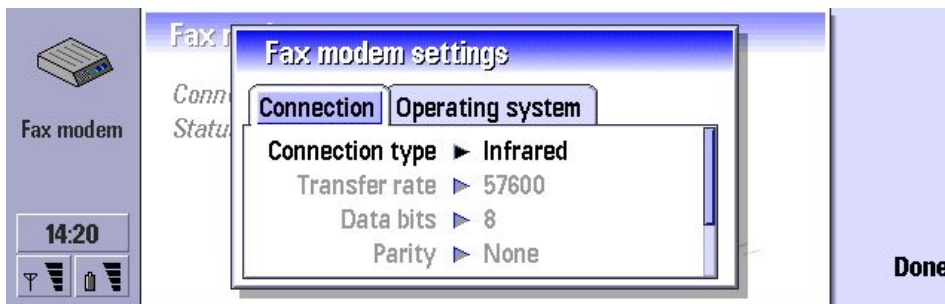
The contents of this document are provided "as is". Except as required by applicable law, no warranties of any kind, either express or implied, including, but not limited to, the implied warranties of merchantability and fitness for a particular purpose, are made in relation to the accuracy, reliability or contents of this document. Nokia reserves the right to revise this document or withdraw it at any time without prior notice.

1. INTRODUCTION

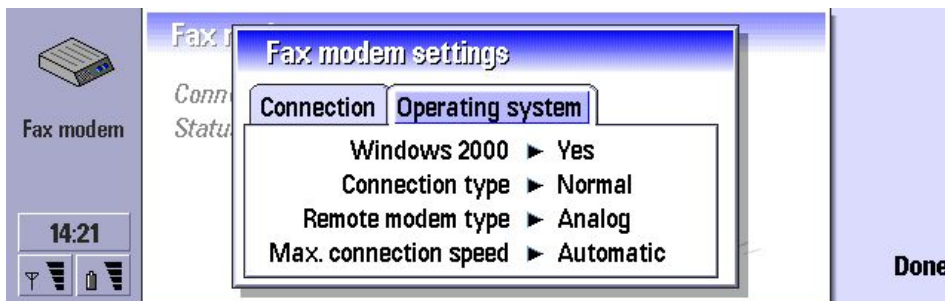
The purpose of this document is help to use Nokia 9210 Communicator as a modem over IR connection.

2. SETTING UP A DIAL-UP CONNECTION FOR USE WITH THE NOKIA 9210 COMMUNICATOR VIA CABLE IN WINDOWS 2000

In the communicator's Fax modem settings, select **Infrared**.



Select **Windows 2000** in Operating system. And then select **Done**.



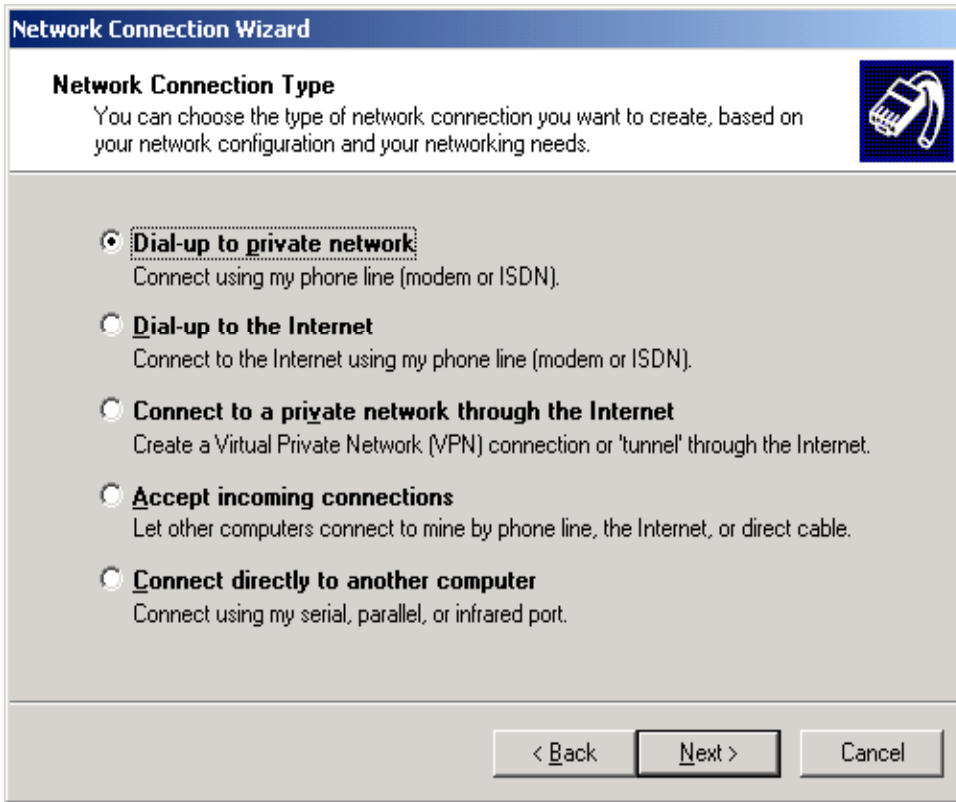
Press **Activate** in the Fax modem main view.



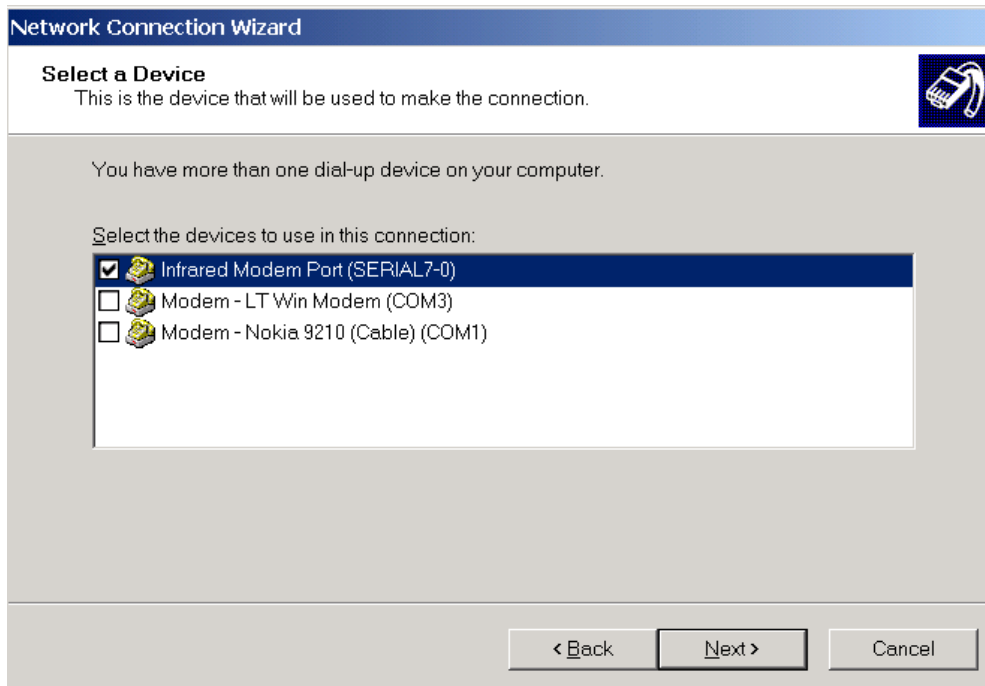
Select **Make New Connection** in **Network and Dial-up connections**. Click **Next** in Network Connection Wizard of Windows 2000.



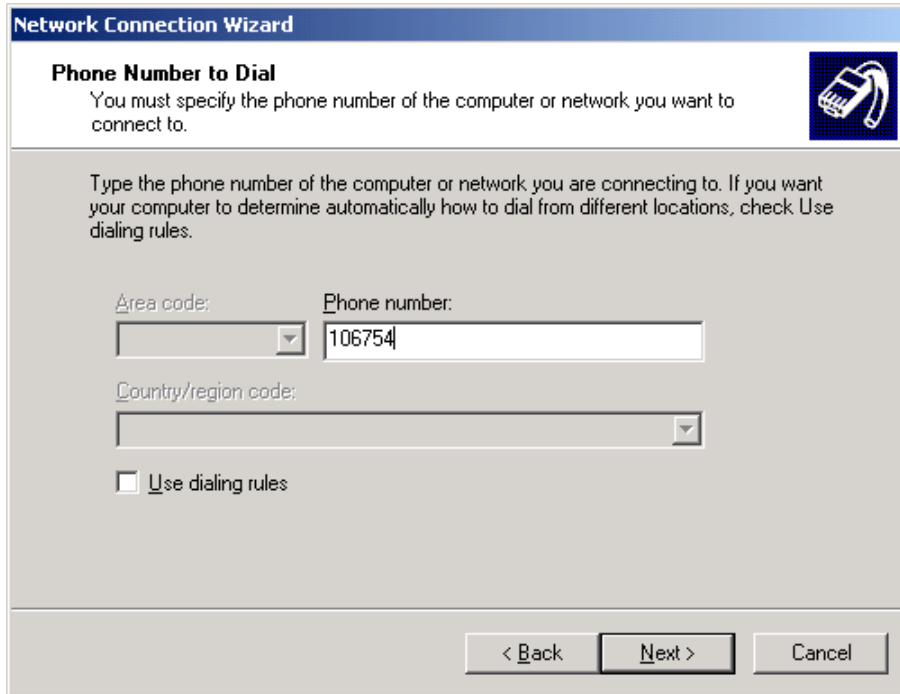
Choose either Dial-up to private network or Dial-up to the Internet and click Next.



Choose **Infrared Modem Port** and click **Next**.

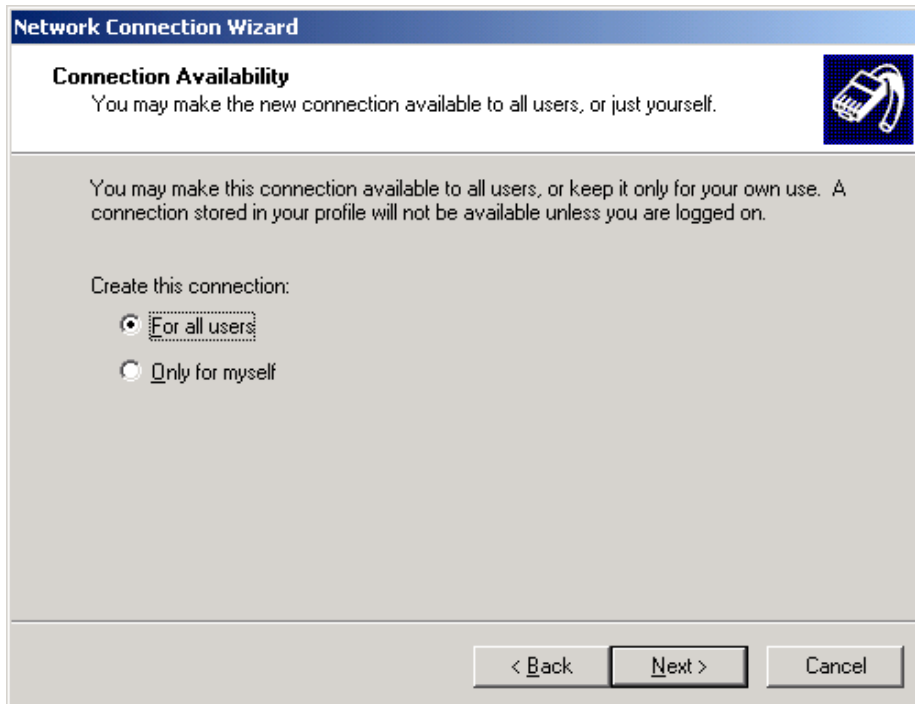


Type in the ISP's phone number and click **Next**.



The screenshot shows the 'Network Connection Wizard' window. The title bar reads 'Network Connection Wizard'. The main heading is 'Phone Number to Dial'. Below the heading is a sub-heading 'Phone Number to Dial' and a paragraph: 'You must specify the phone number of the computer or network you want to connect to.' To the right of this text is a small icon of a mobile phone. Below the paragraph is another paragraph: 'Type the phone number of the computer or network you are connecting to. If you want your computer to determine automatically how to dial from different locations, check Use dialing rules.' There are three input fields: 'Area code:' with a dropdown menu, 'Phone number:' with a text box containing '106754', and 'Country/region code:' with a dropdown menu. Below these fields is a checkbox labeled 'Use dialing rules' which is currently unchecked. At the bottom of the window are three buttons: '< Back', 'Next >', and 'Cancel'.

Choose either **For all users** or **Only for myself** and click **Next**.

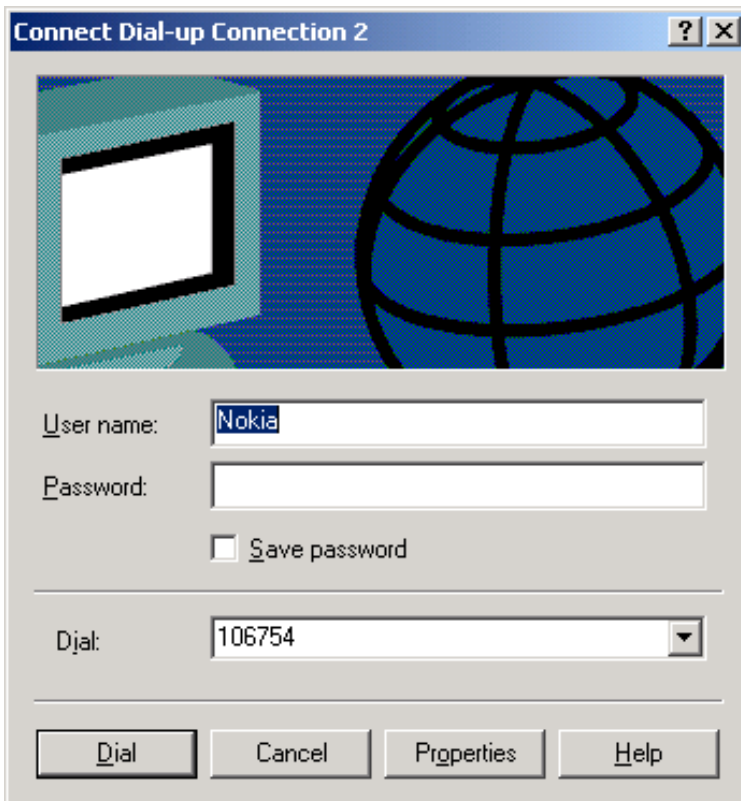


The screenshot shows the 'Network Connection Wizard' window. The title bar reads 'Network Connection Wizard'. The main heading is 'Connection Availability'. Below the heading is a sub-heading 'Connection Availability' and a paragraph: 'You may make the new connection available to all users, or just yourself.' To the right of this text is a small icon of a mobile phone. Below the paragraph is another paragraph: 'You may make this connection available to all users, or keep it only for your own use. A connection stored in your profile will not be available unless you are logged on.' There are two radio button options under the heading 'Create this connection:': 'For all users' (which is selected) and 'Only for myself'. At the bottom of the window are three buttons: '< Back', 'Next >', and 'Cancel'.

Name the connection and click **Finnish**.



Now you should be able to establish a Dial-Up connection to your ISP.



3. TROUBLESHOOTING



Note: If you have already checked all the settings and a data call is not established, try to reboot your PC. It is also recommended that you restart your Nokia 9210 Communicator by removing battery.

If you get an error message (Error :769) before Dial Up starts dialling.

- Check that you have activated Fax modem in Nokia 9210 Communicator
- Check that IrDA port in PC and in Nokia 9210 Communicator are face to face and there is nothing between them.

If you get an error message (Error :651) before Dial Up starts dialling.

- Check from Device manager in PC that IrDA port is enabled
- Check from Bios settings in PC that IrDA port is enabled

If you get an error message (Error :770) after Nokia 9210 Communicator has started to dial

- If you have installed PC Suite for Nokia 9210 on you PC close the PC Suite Icon on the taskbar. Also close the Copy Anywhere icon.



PC Suite icon Copy Anywhere icon

- If there is another piece of software using same Com port, close it and try again.

If you get an error message (Error: 737) after Nokia 9210 Communicator has started to dial Data call dropped by server you were dialling or network signal is weak. Try later again.