

NOKIA 9210 Communicator



SUPPORT GUIDE FOR HOW TO USE NOKIA 9210 COMMUNICATOR AS A MODEM VIA SERIAL PORT CABLE IN WINDOWS 98

NOKIA

Contents

1. INTRODUCTION	3
2. USING THE NOKIA 9210 COMMUNICATOR AS A MODEM VIA SERIAL PORT CABLE WITH MICROSOFT WINDOWS 98	3
3. TROUBLESHOOTING.....	10

Legal Notice

Copyright © Nokia Mobile Phones 2002. All rights reserved.

Reproduction, transfer, distribution or storage of part or all of the contents in this document in any form without the prior written permission of Nokia is prohibited.

Nokia and Nokia Connecting People are registered trademarks of Nokia Corporation. Other product and company names mentioned herein may be trademarks or tradenames of their respective owners.

Nokia operates a policy of continuous development. Nokia reserves the right to make changes and improvements to any of the products described in this document without prior notice.

Under no circumstances shall Nokia be responsible for any loss of data or income or any special, incidental, consequential or indirect damages howsoever caused.

The contents of this document are provided "as is". Except as required by applicable law, no warranties of any kind, either express or implied, including, but not limited to, the implied warranties of merchantability and fitness for a particular purpose, are made in relation to the accuracy, reliability or contents of this document. Nokia reserves the right to revise this document or withdraw it at any time without prior notice.

1. INTRODUCTION

The purpose of this document is to help you to use the Nokia 9210 Communicator as a modem via serial port cable (DLR-2L).

2. USING THE NOKIA 9210 COMMUNICATOR AS A MODEM VIA SERIAL PORT CABLE WITH MICROSOFT WINDOWS 98

The Nokia 9210 Communicator may be connected to a compatible computer via infrared or cable connection. The connection type is selected in the communicator's Fax modem settings (the Fax modem application is found under Extras).

Fax modem installation using a cable connection:

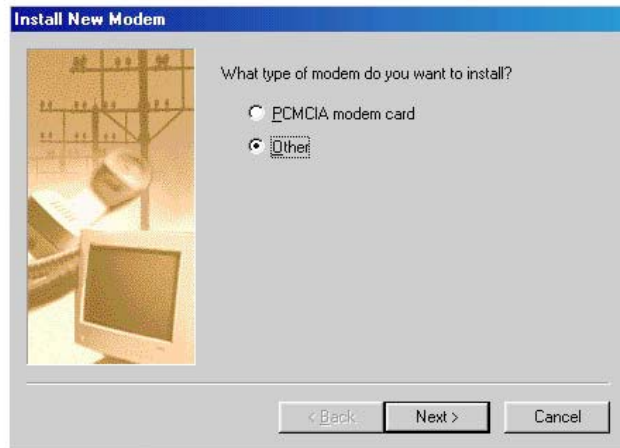
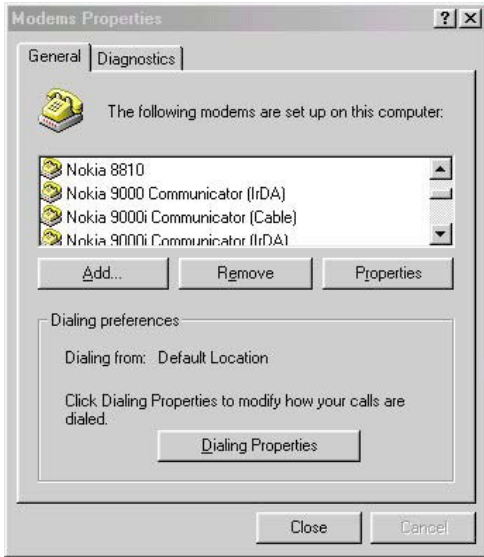
- 1) Start Windows 98 and switch on the communicator's phone interface.

- 2) Insert the Nokia 9210 CD-ROM into the CD-ROM drive of the computer. This CD-ROM contains the modem information file. Alternatively the mdmn9210.inf file is available on <http://www.nokia.com/phones/productsupport/9210/index.html>

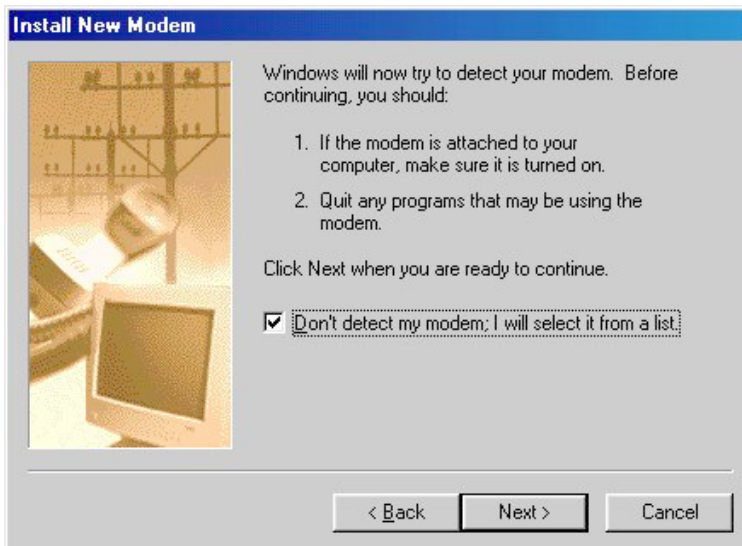
- 3) Connect one end of the cable DLR-2L to the Nokia 9210 Communicator and the other end to the serial port of the computer.

- 4) Double-click the Modems icon in the Control Panel in PC. Click the **Add** button in the Modems Properties Dialog.

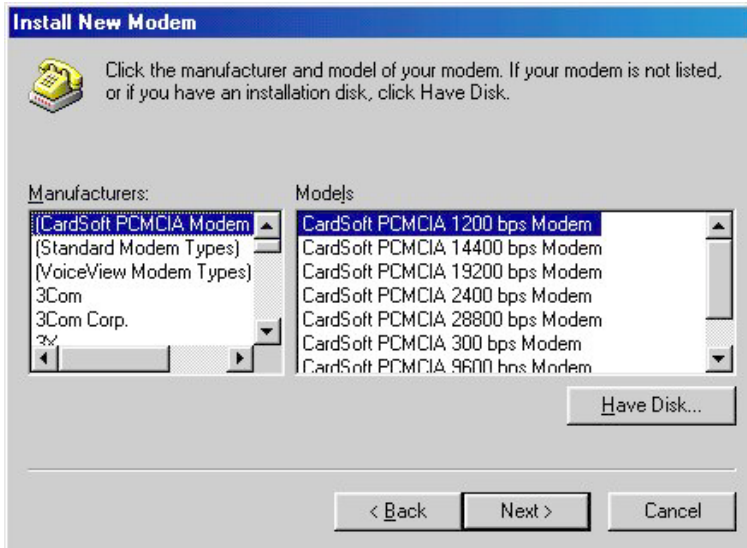
5) Select **Other** to the Question "What type of modem do you want to install?". Click **Next** .



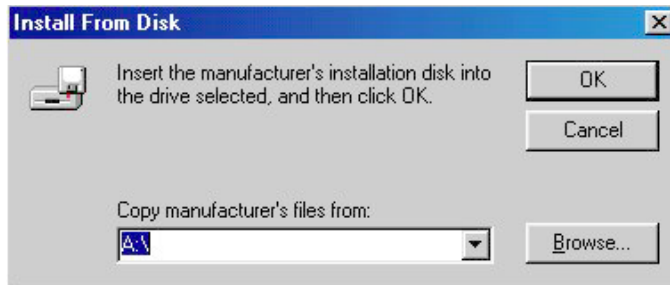
6) Select the option **Don't detect my modem; I will select it from a list.** Click **Next** .



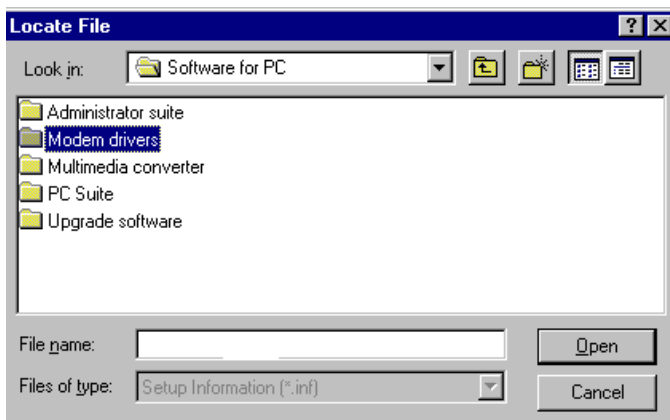
7) Click **Have Disk...**



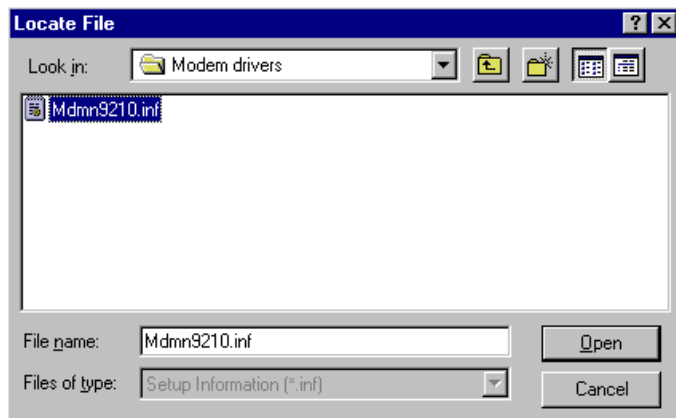
8) Click **Browse** and browse to the CD-ROM drive where the Nokia 9210 Communicator CD-ROM is.



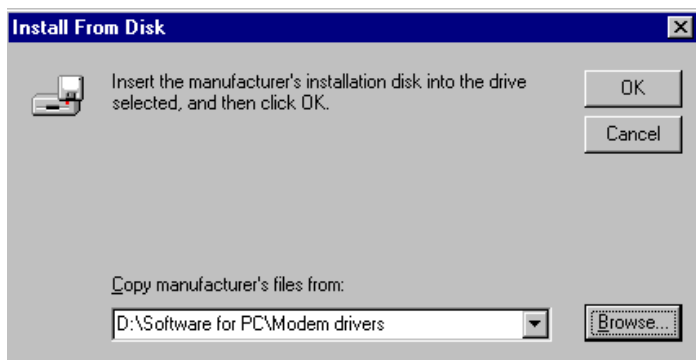
9) On the CD-ROM, browse to the folder named Software for PC/Modem drivers



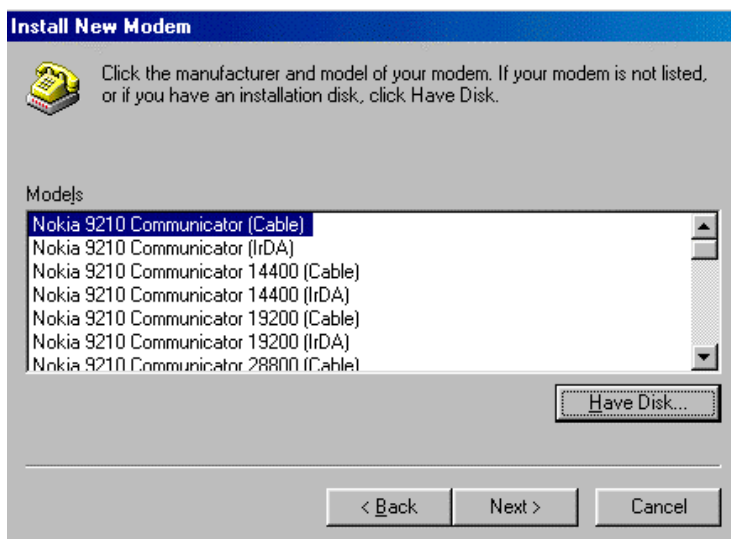
10) From the Modem drivers folder, choose the Mdmn9210.inf file. Click **Open**.



11) Click **OK**



12) Select **Nokia 9210 Communicator (Cable)**; or if you are using a higher speed than 9600 bps select the speed you want and cable connection. Click **Next**.



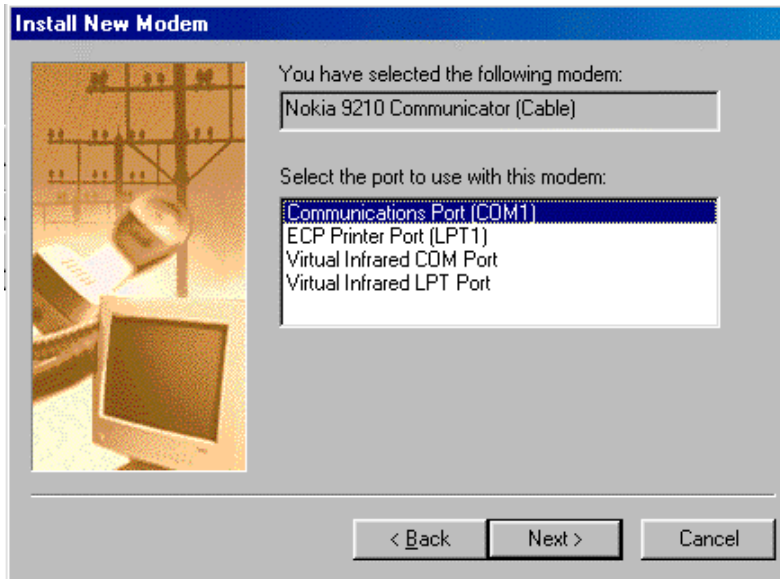


Tip: If you want to use High Speed connection, High Speed Data Services must be activated on the SIM card by your GSM Operator.



Note: If you use fax software i.e. WinFaxPro 10 and the Nokia 9210 Communicator as a fax modem via serial port cable, first install the Nokia 9210 Fax (Cable 19200 bps).

13) Choose the COM port where the cable DLR-2L is connected. Click **Next**.

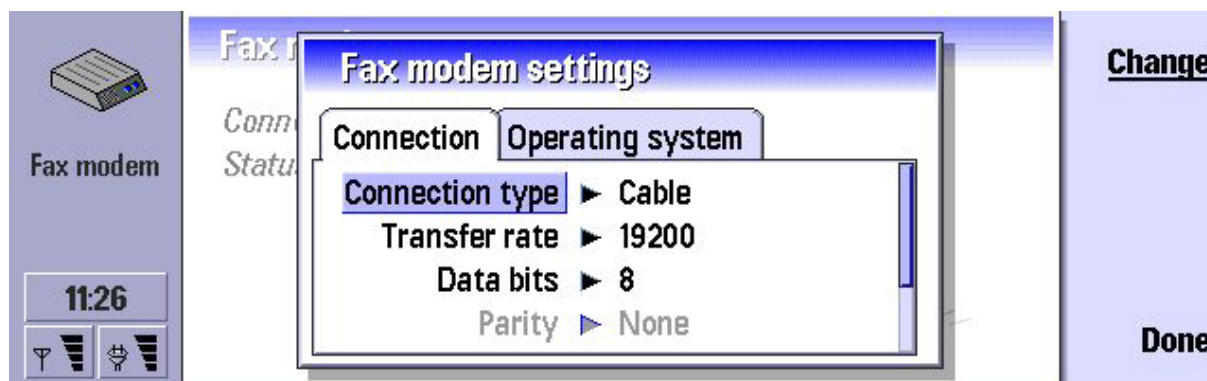


11) Click **Finish**.



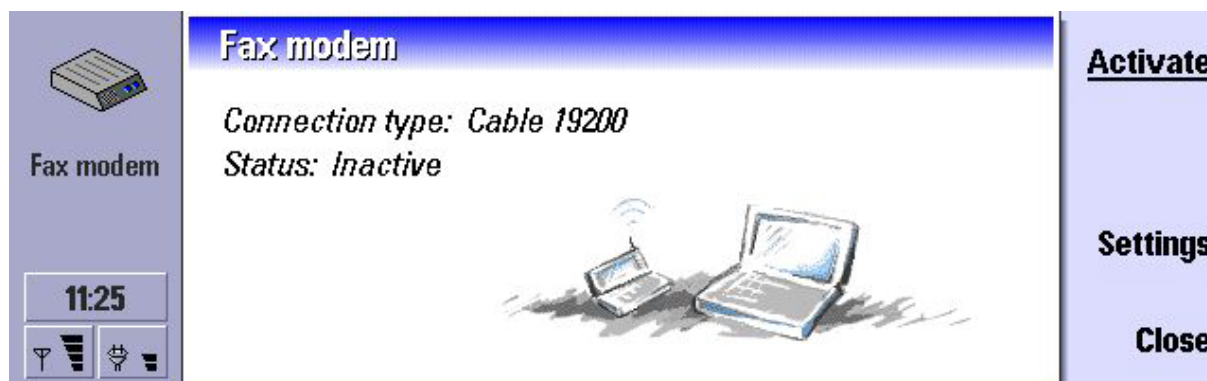
12) Remove the CD-ROM from the CD-ROM drive. Restart the computer.

13) In the communicator select Extras - Fax modem – Settings. For Connection type select **Cable**, Transfer rate **19200**, Data bits **8**, Stop bits **1**, Flow control **Software**.

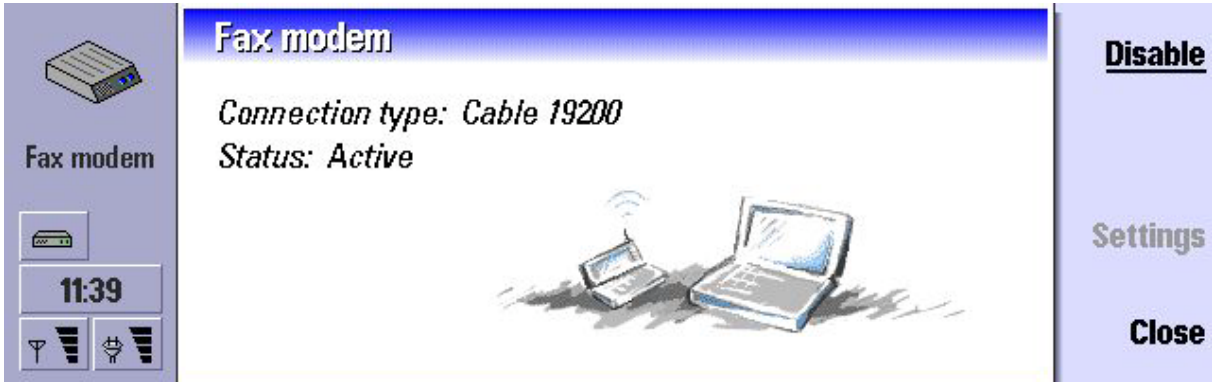


i **Note:** Transfer rate is the speed with which the data is transferred between your communicator and PC. The best transfer rate for normal GSM calls is 19200. For high speed calls, you should select 115200. Select the same rate in your PC application as well.

14) Press **Activate** in the Fax modem main view to activate the Fax modem.



15) After activating the Fax modem, you may start to use your communicator as a modem with Windows 98 via cable. When you want to deactivate the Fax modem, press **Disable**.



3. TROUBLESHOOTING



Note: If you have already checked all the settings and a data call is not established, try to reboot your PC. It is also recommended that you restart your Nokia 9210 Communicator by removing battery.

If you get an error message (Error: 630) before Dial Up starts dialling.

- Check that the cable is connected
- If you have installed PC Suite for Nokia 9210 on your PC close the PC Suite icon on the taskbar. Also close the Copy Anywhere icon.



PC Suite icon Copy Anywhere icon

- If there is another piece of software using same Com port, close it and try again.

If you get an error message (Error: 629 or 630) after the Nokia 9210 Communicator has started to dial

- Check that you have selected the same speed for the Dial Up connection as you have selected in the 9210's Fax/Modem settings (Select **Dial up-properties - Configure**)
- Change com port speed to same you have set up for 9210 Fax/modem settings (**Start-Settings-Control Panel-System-Device Manager-Port-Port number (e.g.com1)-Properties-Port Settings-Bits per second**)

If you get an error message (Error: 678) after Nokia 9210 Communicator has started to dial

- Data call dropped by server you were dialling or network signal is weak. Try later again.